



Mr Mark Griffiths
Headteacher

With God, all things are possible.

ST. MARGARET'S ANFIELD CE PRIMARY SCHOOL
Lower Breck Road, Liverpool L6 4BX
Email: admin@st-margaretsanfield.liverpool.sch.uk
Telephone: 0151 260 5522



29th April 2024

Dear Parent/Carer,

Year 3 Trip to Knowsley Safari Park

Year 3 will be going to Knowsley Safari Park on Friday 28th June 2024. We will be leaving school promptly at 9:15am and aim to be back by 3:15pm. We may be a little late depending on the traffic.

Children will need a packed lunch in a disposable plastic bag. No glass bottles or fizzy pop please. If you require a school packed lunch then please tick the appropriate box below.

We are asking for a voluntary contribution of **£10.00** per child to cover the cost of the trip. The requested contribution for this trip is voluntary, but the trip can only take place if the school receives sufficient contributions. In the event that the trip has to be cancelled a full refund will be given.

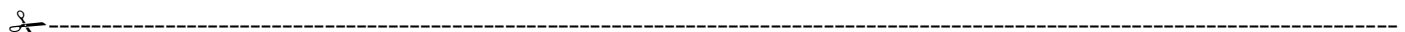
Please send your £10 contribution in to school by **Friday 24th May 2024**. May we remind you that trips can now also be paid for using SchoolComms.

Please complete the consent slip below and the medical details on the attached form and return to school as soon as possible.

Yours sincerely,

Mrs Lee-Gossage
Year 3 Teacher

Miss Burd
Year 3 Teacher



Year 3 Trip to Knowsley Safari Park

Child's Name: Class:

- I give my child permission to go to Knowsley Safari Park Friday 28th June 2024.
- I enclose a voluntary contribution of **£10.00**
- I have paid using SchoolComms
- I require a school packed lunch

Signed (Parent/Carer) Date



Truth - Fairness - Justice - Joy