



# St. Margaret's Anfield

## Church of England Primary School

With God, all things are possible.

**Friday 22nd  
March 2024**

Breakfast club is available  
from 8am every morning.  
Free of charge

### PE DAYS

NURSERY—WEDNESDAY

RECEPTION — FRIDAY

YEAR 1 — THURSDAY

YEAR 2 — FRIDAY

YEAR 3 - MONDAY

YEAR 4 - MONDAY

YEAR 5 - WEDNESDAY

YEAR 6 - TUESDAY

### EASYFUNDRAISING

Sign up to Easyfundraising to help  
raise money for school as you  
shop! Click the logo below for  
info!

Please consider using this when  
doing your online shopping!



### X(Twitter)

Twitter is updated daily with  
photos and activities happening  
in school!

Click  to go to Twitter and  
find us @StMargAnfield to  
follow!

### MESSAGE FROM MR GRIFFITHS

We have just three and a half school days left until the end of this  
Spring Term.

Nursery finish on Wednesday (27th March) at their normal finishing  
times of 11.30am for the Morning Session and 3.30pm for the  
Afternoon Session.

The rest of school, Reception—Year 6 will finish at 1.15pm on  
Thursday 28th March. **All pupils will return to school on Monday  
15th April.**

Attendance has really dipped in the last 2 weeks. Please see the next  
page for each classes attendance. We have finished this week under  
92%. As children have trips and assessments coming up, please ensure  
their attendance is as high as possible so they do not miss out.

Year 2 visited Martin Mere this week and had a great time. It did  
rain in the morning but as Martin Mere is a wetlands this only added  
to the experience. Other year groups will have their trips after  
Easter. Please keep an eye out for any letters sent home with your  
child.

Thank you to everyone who helped make the Red Nose Day for Comic  
Relief fundraising such a success last Friday. Red Noses and Pin  
Badges sold out so quickly we will consider stocking up a few more  
next year!

Next week we will have no after school clubs with the exception of  
Monday's Year 6 booster classes.

Next Tuesday (26th March) we have an action packed day. We have  
our Easter Bonnet Parade and Eggstravaganza with prizes for our  
most creative designs! We are also holding our Parent's Evening—this  
is by appointment only and you should arrive no earlier than 5 minutes  
before your allocated time. If you are not able to attend or have not  
yet arranged a time slot please speak with your child's class teacher  
or contact the school office ASAP.

Next Wednesday parents and carers of Year 4 children are welcome  
to join us for their Easter Service at St Margaret's Anfield Church  
(corner of Belmont Road).

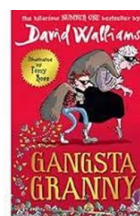
During Easter LSC Multisports will be hosting a holiday club at our  
school. Please see link [here](#) for more information.

Have a great weekend!

Mr Griffiths

### BOOK RECOMMENDATION FROM MISS SMITH

Gangster Granny by David Walliams. This is a great  
book for older children or to be read to younger  
children. David Walliams books are always a great  
source of humour and ideas for World Book Day  
dressing up!



### UPCOMING EVENTS

#### MONDAY 11TH MARCH

Swim Gala—invite only

3:15pm-4:15pm LSC Multisports After  
School Club (Years 1&2)

3:15pm-4:15pm Year 6 Boosters (set  
groups)

#### TUESDAY 12TH MARCH

EASTER BONNET PARADE AND  
EGGSTRAVAGANZA

Parents Evening—by appointment only

#### WEDNESDAY 13TH MARCH

Year 4 Easter Service at St Margaret's  
Anfield Church—Year 4 Parents/Carers  
welcome

NURSERY FINISH FOR EASTER  
HOLIDAYS

#### THURSDAY 14TH MARCH

1.15PM RECEPTION—YEAR 6 FINISH  
FOR EASTER HOLIDAYS

**FRIDAY 15TH MARCH**  
SCHOOL IS CLOSED FOR GOOD  
FRIDAY

#### MONDAY 15TH APRIL

RETURN TO SCHOOL FOR ALL PUPILS

*Please remember all children attending after  
school clubs must be collected by an adult.*

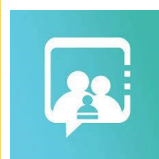
### MAKING PAYMENTS

Please download our new App  
"SchoolComms"



Payments are available for dinner  
money, trips and we will keep you up to  
date with anything further.

### KEEPING IN TOUCH



#### PARENT CONNECT APP

All messages sent by the school are through our Parent Connect App. If you do not have the app please ensure you download it. You can click the logos below depending on your phone/tablet type to download for free or search "Parent Connect". We send out weekly invites by email to anyone who is not registered. If you do have the app please check your notifications are turned on or you will miss messages from school. If you are unsure please contact Mrs Cave at the school office 0151 260 5522.





# St. Margaret's Anfield

## Church of England Primary School

With God, all things are possible.

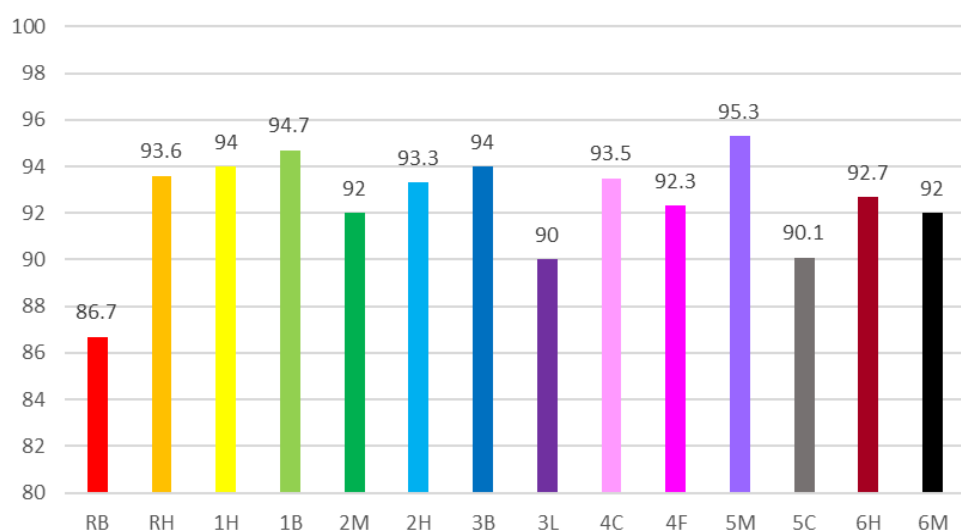
### ATTENDANCE REPORT

MONDAY 11TH MARCH 2024 TO FRIDAY 15TH MARCH 2024

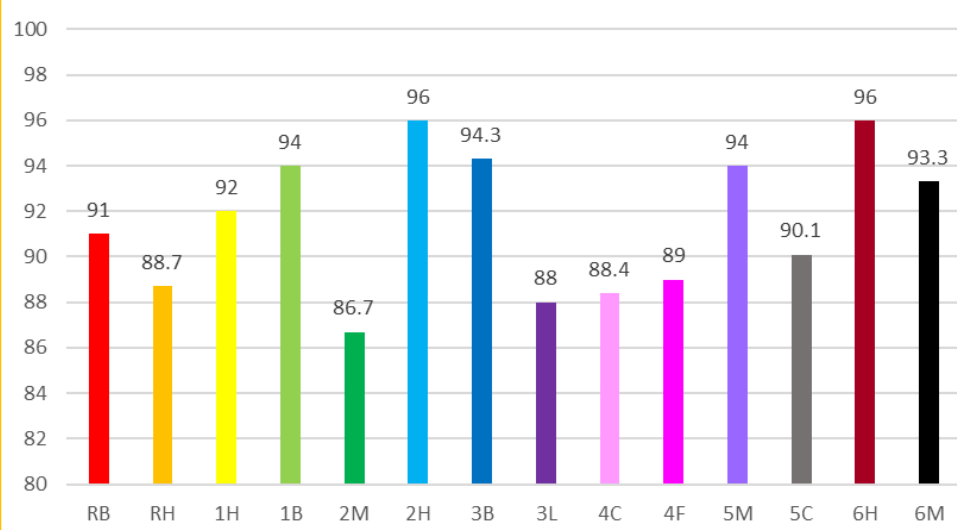
### ATTENDANCE REPORT

MONDAY 18TH MARCH 2024—FRIDAY 22ND MARCH 2024

This week's % attendance



This week's % attendance



### What happens if your child does not attend school regularly?

- You will be contacted by Ms Cavanagh.
- You may be invited to attend a meeting in school to discuss how we can work together to improve your child's attendance and to set up an attendance support plan.
- As a school, we are responsible by law for reporting poor attendance to the local authority.
- As a parent, you are committing an offence if you fail to make sure that your child attends school regularly.
- You run the risk of being issued with a penalty notice or being taken to court.  
A child who has an attendance figure of 90% or below is now classed by the government as 'a child with persistent absence'.

### SMA Attendance Target

There is sometimes a perception that an attendance rate of 90% is good.

This is because an examination score of 90% means excellence. However, as an attendance rate, 90% is unsatisfactory, it equates to missing 20 days per year.

We consider below 92% as approaching persistent absence.

The whole school attendance target this year is 97%.

### Parent/Carer Support

We must ask you, our Parents/Carers to support us in improving the attendance of our children.

Every lesson really does count for your child, children can quickly fall behind if even one day is missed, catching up even a little lost time from school can be really difficult. Good attendance is linked to achievement, better relationships with other children and better overall behaviour in school.

### EASTER RAFFLE

Tickets are on sale from the school office and will also be on sale at Parents Evening on Tuesday after school.

£1 per strip or 20p per ticket!

