

Geometric	Mathematical shapes with straight lines, angles and point
Horizontal	Flat or level with the ground and not at an angle to it
Irregular	When shapes or lines are not formed of the same sizes
Line	A mark on a surface can be different lengths, widths and create shapes
Mark-making	The creation of different lines, patterns and shapes
Observation	To look at something carefully
Regular	A consistent size or pattern
Texture	A surface quality that is not flat
Vertical	Pointing straight up at a 90 degree angle from a horizontal base

### Artists

Bridget Riley


Zaria Forman


Renata Bernal

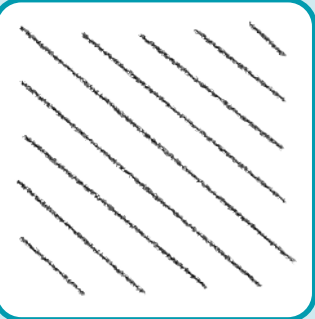
Wassily Kandinsky

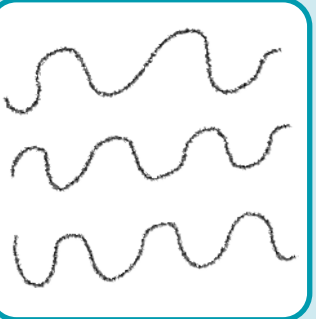
Ilya Bolotowsky

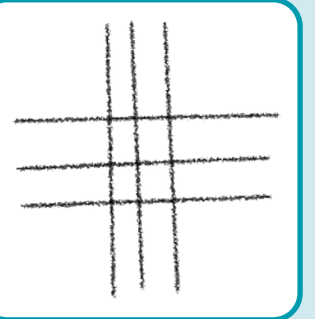
### Different types of lines














Horizontal

Vertical

Diagonal

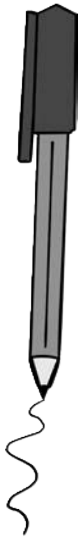
Wavy

Cross-hatched

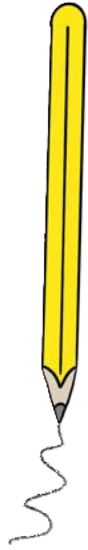
Broken

Different materials and their marks

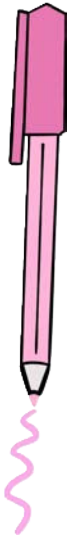
Biro



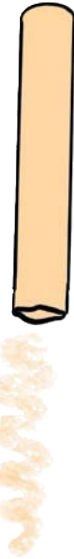
Pencil



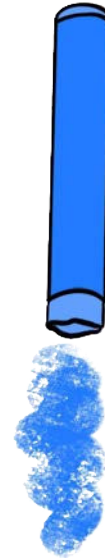
Felt pen



Soft pastel



Oil pastel



Crayon



Charcoal



Mark-making

How would you make these marks?

